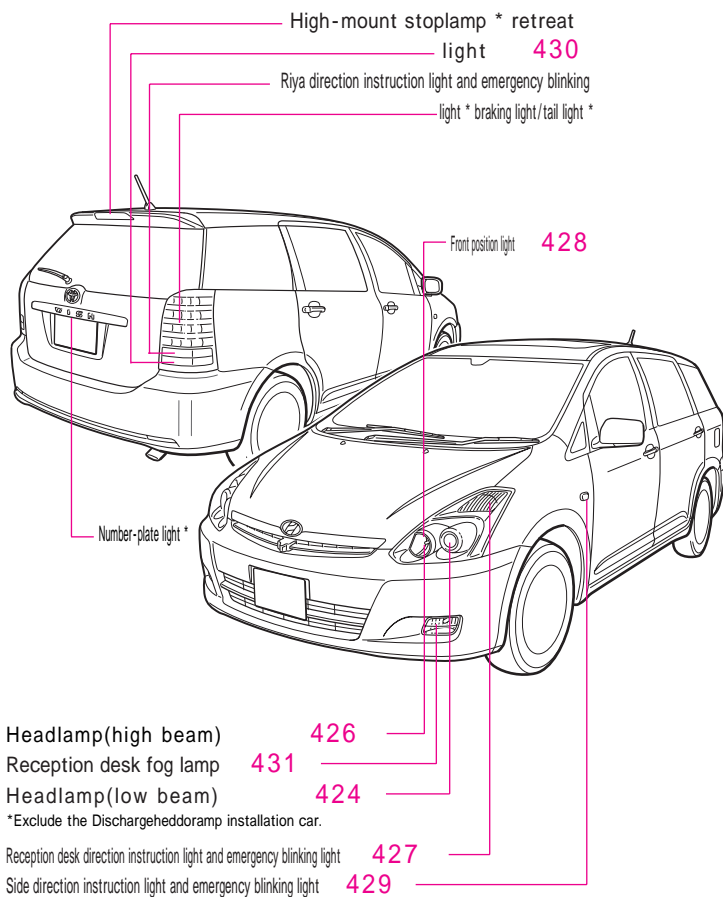


Lamp (valve) exchanges of exteriors

In the exterior of this car, there is a lamp (valve) shown in the figure below. -
 Read a pertinent page about the exchange of lamps that describe the number of pages.
 - - Consult the Toyota shop about the exchange of lamps that describe the sign.





Guard the following when you exchange lamps.
It might cause important injury and the burn if it doesn't defend.

- Consult the Toyota shop when you exchange Dischargehedoramp (Include the lamp exchange). When the lighting operation is done with it touched the lamp socket, momentarily a high voltage of 20,000V is generated, and it is likely to get an electric shock. -
- Exchange it after getting cold the lamp of turning off each lamp when you exchange lamps. The burn might be done.



Handle the lamp very carefully.

- Drop because pressure in the glass is high, throw the thing or damage and the glass might scatter damaging it, and handle the tungsten halogen lamp very carefully. Moreover, wear beautiful gloves without touching by bare-handed. -
- Use lamps of the same number of W. (Refer to P.449.)-
- Install the lamp and the lamp fastening device surely. When the installation is imperfect, it breaks down by the temporary halt etc. and it is likely to connect as it is inside of the lens and is cloudy. -
- Work noting that the tool, the lamp or neither lamp fastening device nor the socket, etc. are lost when you exchange lamps.



About the cloudy weather of the lamp

The inside of the lens might become cloudy lamped of the headlamp etc. by use conditions of the rain running and the carwash, etc. This is a similar phenomenon to fogging up the windows in the one by the temperatures fluctuate of the inside of the lamp and air such as rain, and doesn't have the problem on the function. However, receive the check in the Toyota shop when water has collected in time when a big drop of water is attached in the lens and the lamp.

About the exchange of lamps

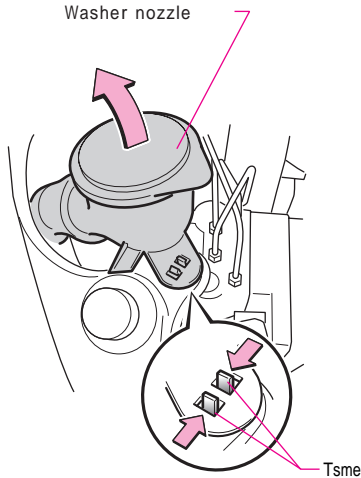
Consult the Toyota shop about the person who worries about the damage of parts etc. when you do the exchange work of the lamp.



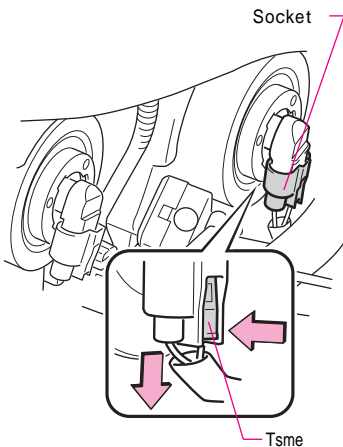
● Headlamp(low beam)

Exclude the Dischargehedoramp installation car.

- Those who detach it

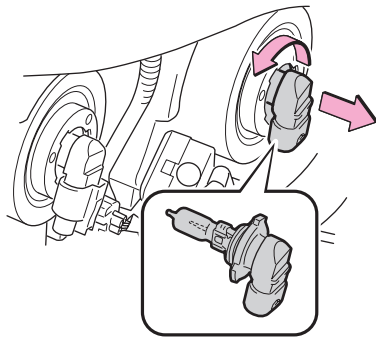


- 1 It opens the hood.
- 2 Knock down the washer nozzle on the driver's seat side.
Remove while picking up Tsme, and knock it down.



- 3 Detach the socket from the lamp pushing Tsme.
The work space broadens when the passenger's seat side detaches the cover of the fuse box in the engine room. About how to detach the fuse box Refer to P.415.

- It explains figure on the driver's seat side.



- 4 Spend the lamp in the direction of the arrow and take it out.

- Those who install it

Install it according to a reverse procedure to detaching.

When the cover of the fuse box in the engine room is removed and you work, confirm fixing the cover, and fixation surely.

- It explains figure on the driver's seat side.

Contents



Warning

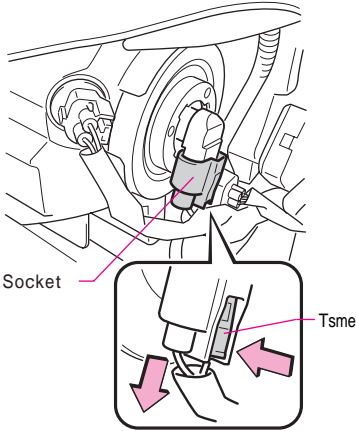
Basic
contents, operationDriving
Handling
deviceThe
Handling indoor
equipmentGood. Safety
of
To
theory, practice
and
equipmentHow
to
attention
associate, aiming,
car

Maintenance

Myriad
One(D)C
with

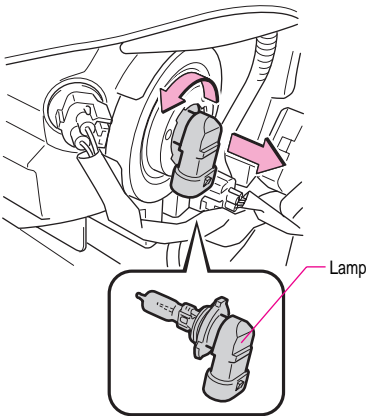
Index

● Headlamp(high beam)



- Those who detach it

- 1 Open the hood, push T-sme, and detach the socket from the lamp.
The work space broadens when the passenger's seat side detaches the cover of the fuse box in the engine room. About how to detach the fuse box Refer to P.415.



- 2 Spend the lamp in the direction of the arrow and take it out.

- Those who install it

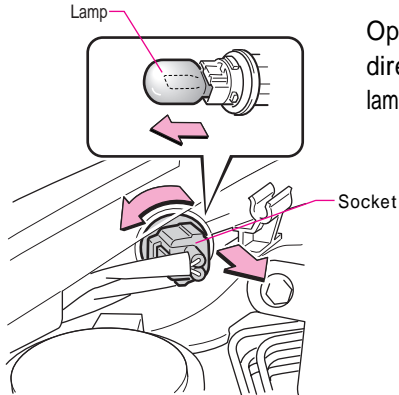
Install it according to a reverse procedure to detaching.

When the cover of the fuse box in the engine room is removed and you work, confirm fixing the cover, and fixation surely.

- It explains figure on the driver's seat side.



● Reception desk direction instruction light and emergency blinking light



- Those who detach it

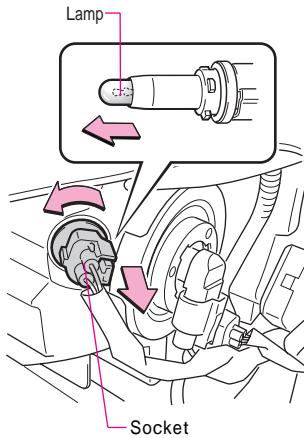
Open the hood, spend the socket in the direction of the arrow, pull out, and detach the lamp from the socket.

- Those who install it

Install it according to a reverse procedure to detaching.

- It explains figure on the driver's seat side.

● Front position light



- Those who detach it

Open the hood, spend the socket in the direction of the arrow, pull out, and detach the lamp from the socket.

- Those who install it

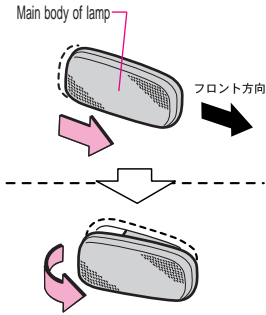
Install it according to a reverse procedure to detaching.

- It explains figure on the driver's seat side.



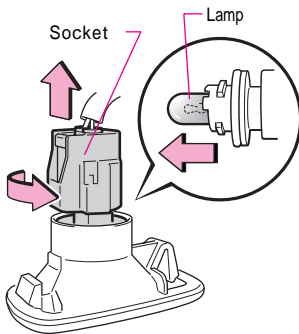
Side direction instruction light and emergency blinking light

- Those who detach it



1 Detach the main body of the lamp.

Pull the back of the lamp forward with the slide done forward of the vehicle and detach the main body of the lamp.



2 Spend the socket in the direction of the arrow and extract the lamp.

- Those who install it

Install it according to a reverse procedure to detaching.



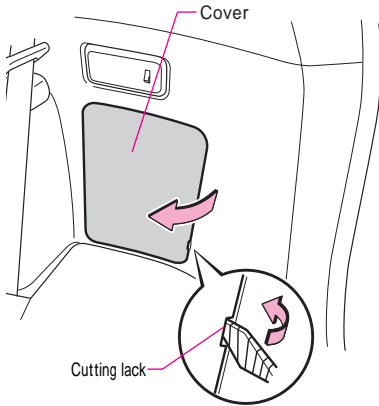
注意

When the socket is removed from the main body, it becomes easy for the socket to drop in the vehicle. Work noting no fall.

- It explains figure on the driver's seat side.

Retreat light

- Those who detach it



1 Open the backing door, and detach the cover.

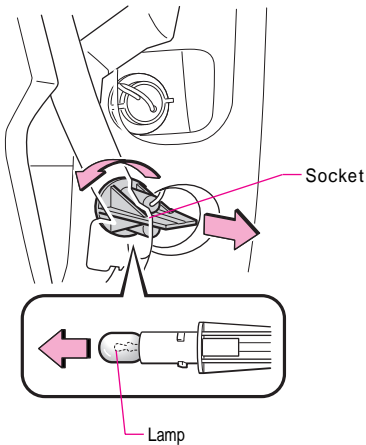
The driver's seat side inserts and detaches a minus driver to the cutting lack of the cover (one place). -

Wrap the vinyl tape etc. around minus driver's point for the damaged prevention.

- The above figure is an illustration on the driver's seat side.

2 Detach the lamp.

Spent the socket in the direction of the arrow, take out, and extract the lamp from the socket.



- Those who install it

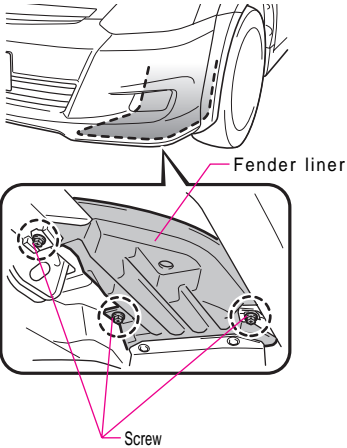
Install it according to a reverse procedure to detaching.

- It explains figure on the passenger's seat side.



● Reception desk fog lamp

Europampar installation car

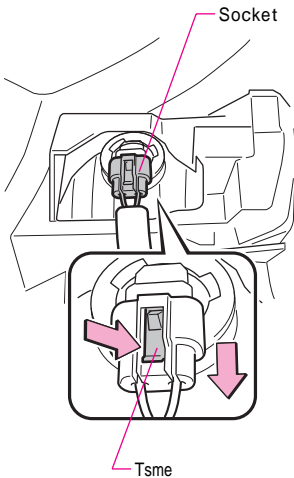


- Those who detach it

- 1 Move the screw and move the removing fender liner.

Remove the screw (3), and move the fender liner to Gawa so that the hand is put between the fender liner and the bumper. -

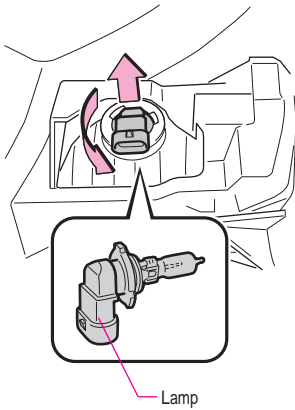
In the bumper side fixation part, might be able it to be fixed with the clip, and to take the clip by removing the screw.



- 2 Detach the socket from the lamp pushing Tsme.

- It explains figure on the passenger's seat side.

3 Spend the lamp in the direction of the arrow and take it out.



- Those who install it

Install it according to a reverse procedure to detaching.

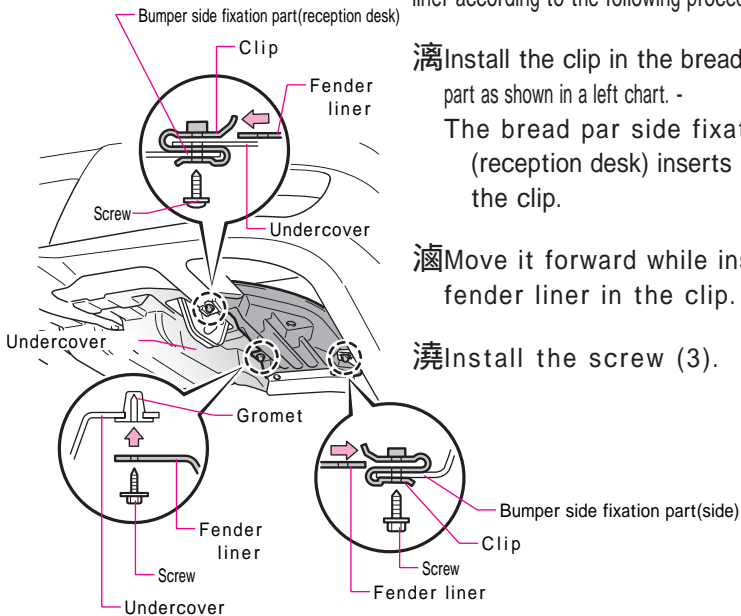
Install it about those who install it about the fender liner according to the following procedure.

滴 Install the clip in the bread par side fixation part as shown in a left chart. -

The bread par side fixation part (reception desk) inserts the cover under in the clip.

涵 Move it forward while inserting the fender liner in the clip.

澆 Install the screw (3).



- It explains figure on the passenger's seat side.

